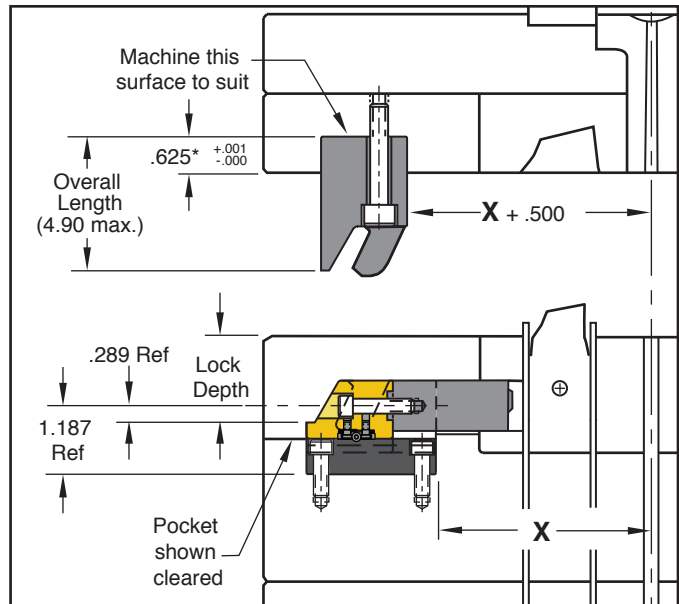
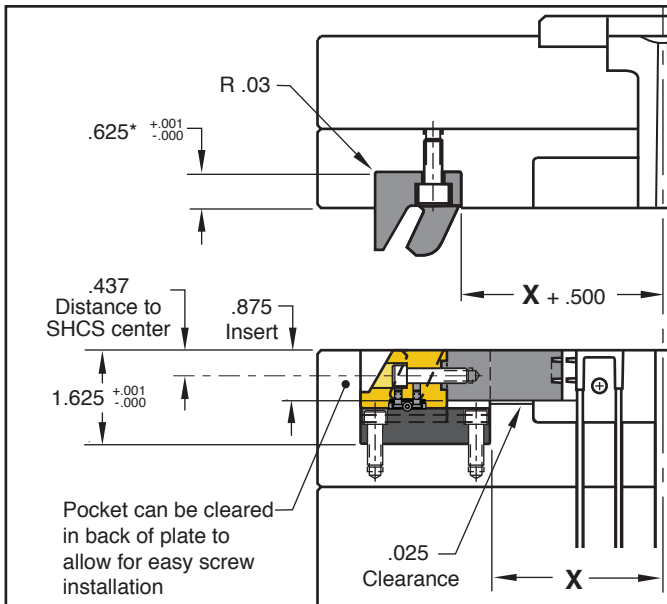
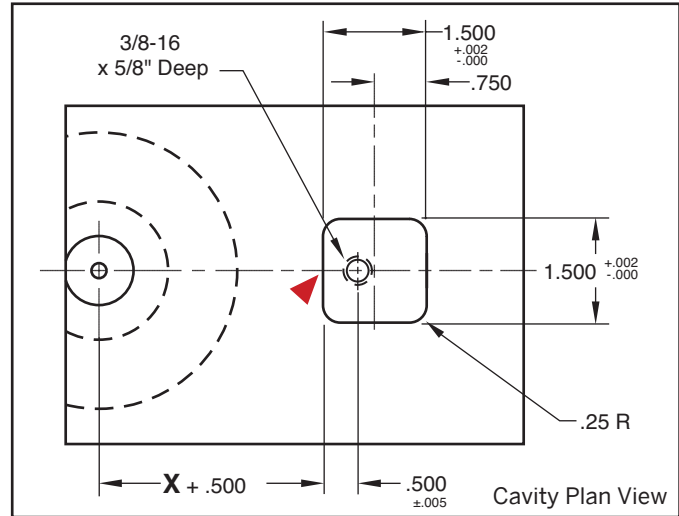
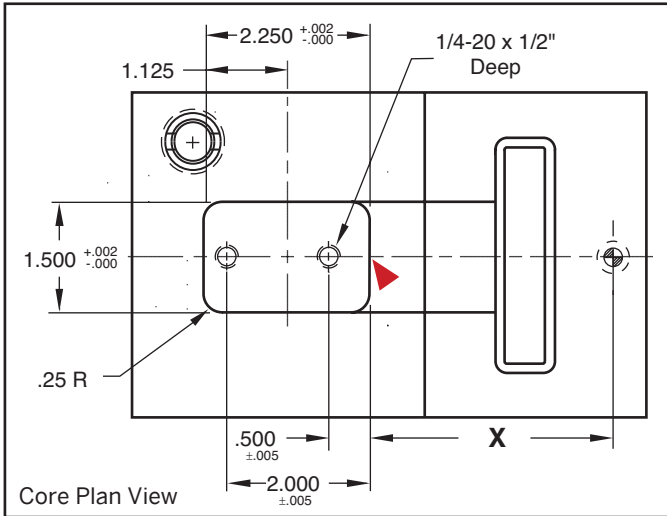
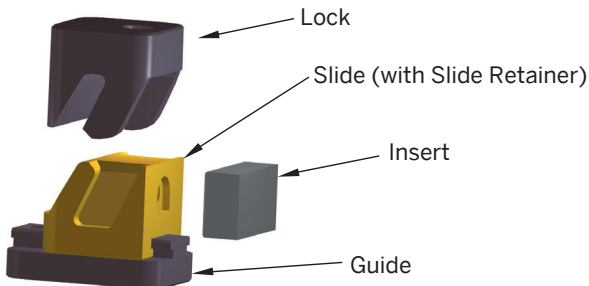


CAM ACTION®

300 SERIES: INCH STANDARD



*Minus pre-load.



Notes:

- Each assembly includes SRT-10 Slide Retainer and (3) mounting screws.
- Max operating temperature 425°F (220°C).

Travel = .250"

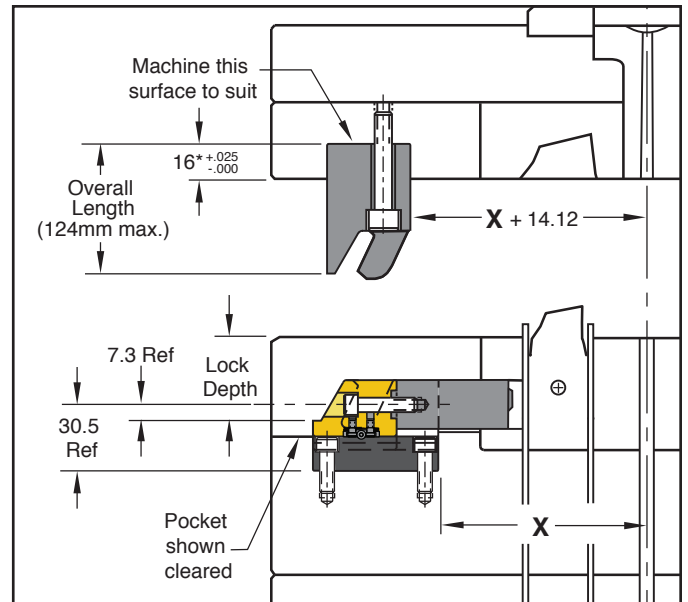
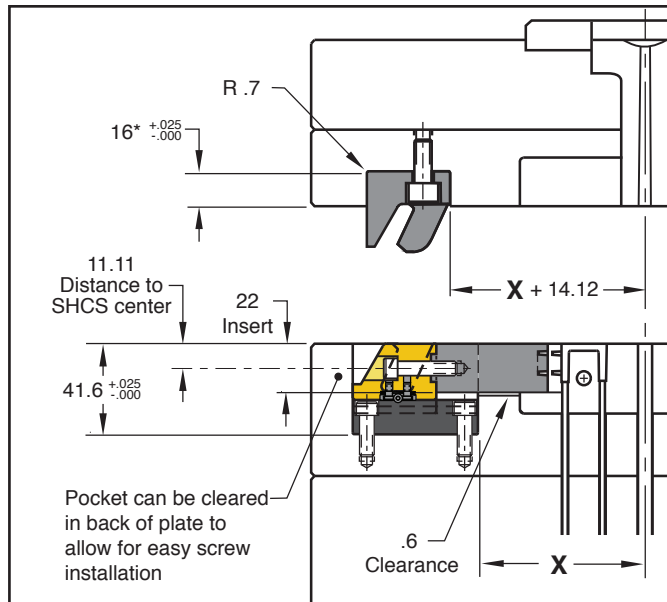
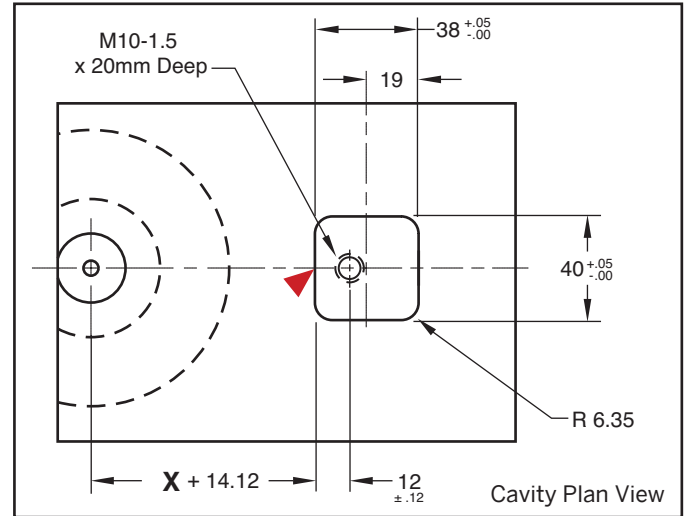
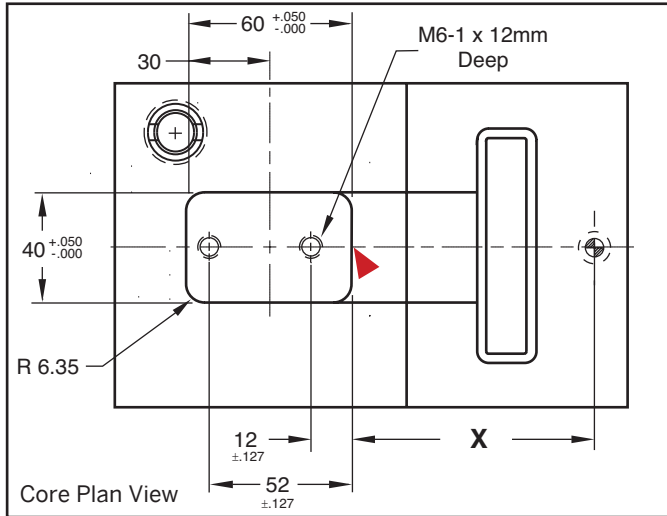
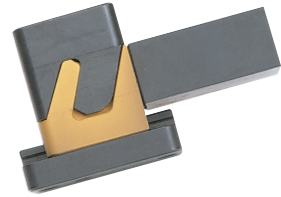
▶ CAD insertion point

CATALOG NUMBER	DESCRIPTION
CA-300	CamAction Unit-Standard Lock
CA-300L	CamAction Unit-Longer Lock

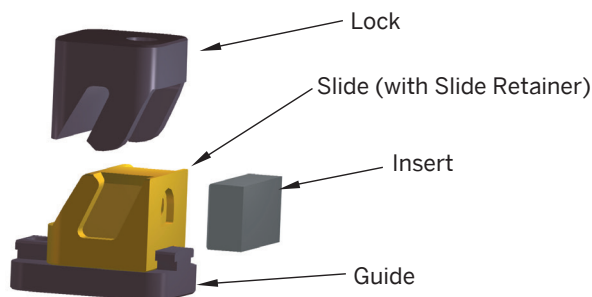
PART NAME	MATERIAL/TREATMENT
Lock	H-13, 40-44 HRC, Black Nitride
Slide	H-13, 40-44 HRC, Titanium Nitride
Guide	4140, 28-32 HRC, Black Nitride



CAM ACTION® 300 SERIES: METRIC STANDARD



*Minus pre-load.



Travel = 6.35 mm

▶ CAD insertion point

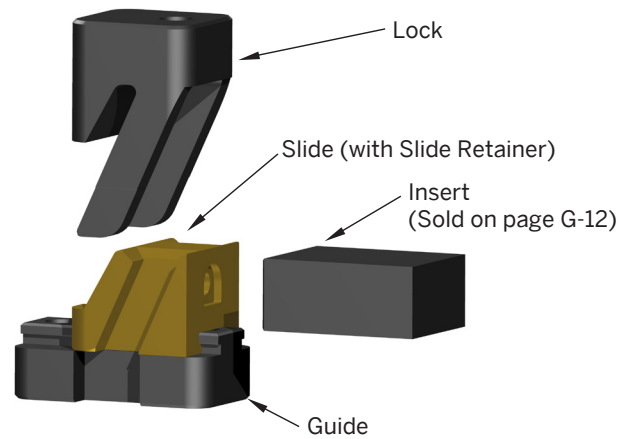
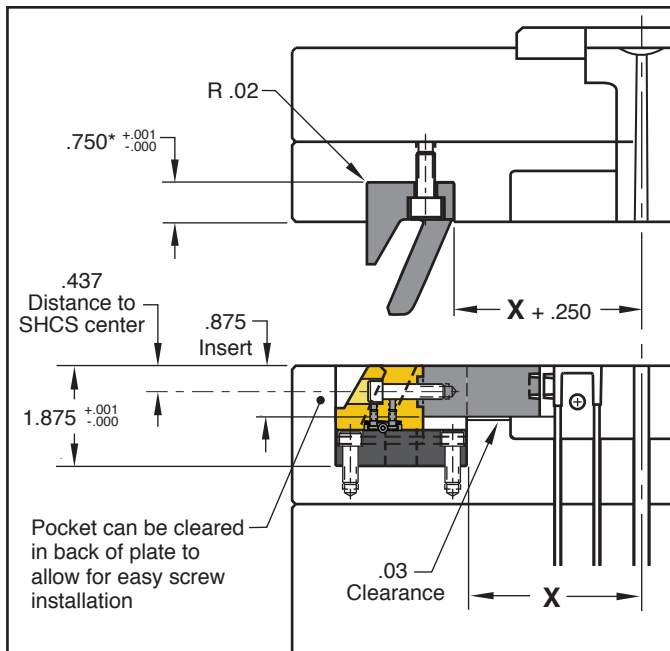
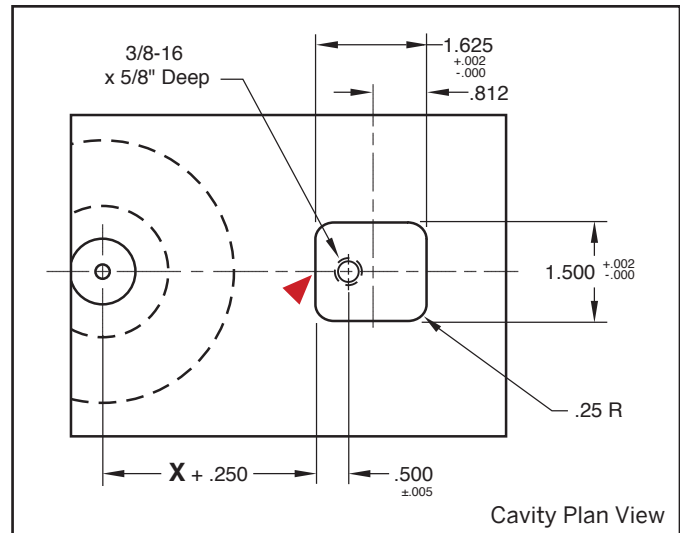
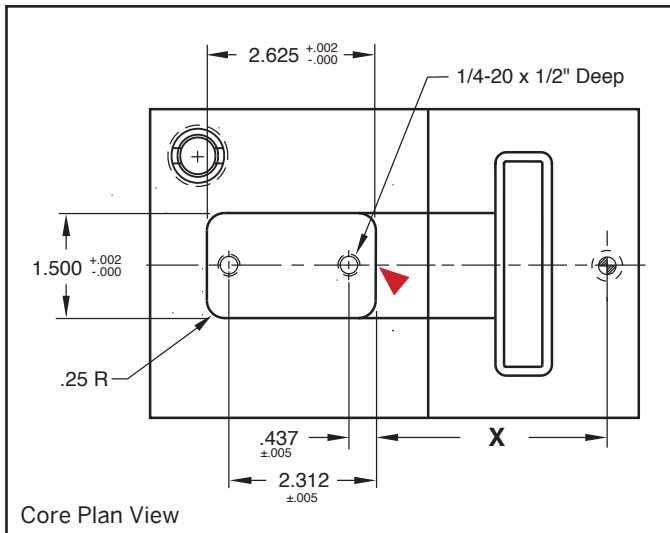
CATALOG NUMBER	DESCRIPTION
CAMM-300	Metric CamAction Unit-Standard Lock
CAMM-300L	Metric CamAction Unit-Longer Lock

Notes:

- Each assembly includes SRTM-04 Slide Retainer and (3) mounting screws. Individual replacement parts are available.
- Max operating temperature 425°F (220°C).
- See page G-8 for materials and treatments.

CAM ACTION®

350 SERIES: INCH STANDARD



Travel = .750"

▶ CAD insertion point

CATALOG NUMBER	DESCRIPTION
CA-350	CamAction Unit: 350 Series

Notes:

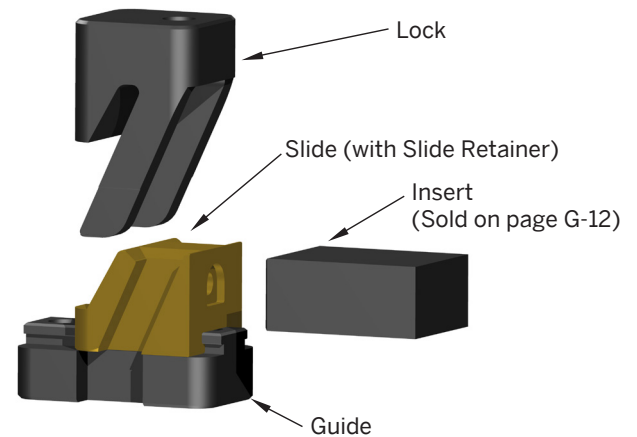
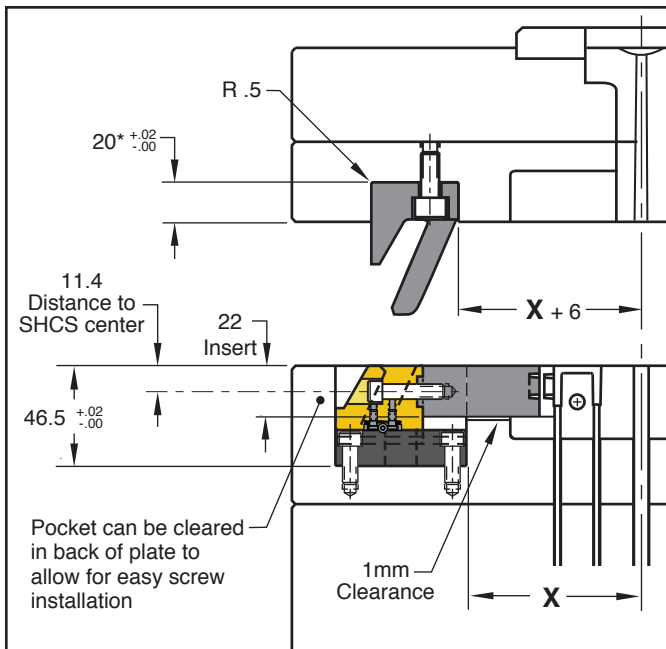
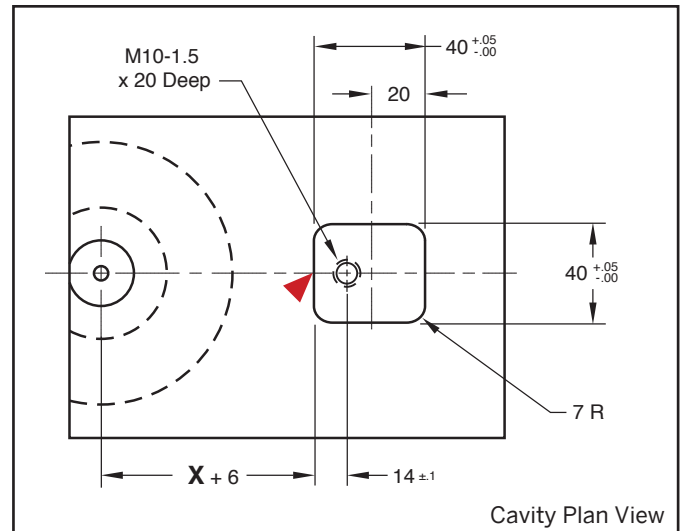
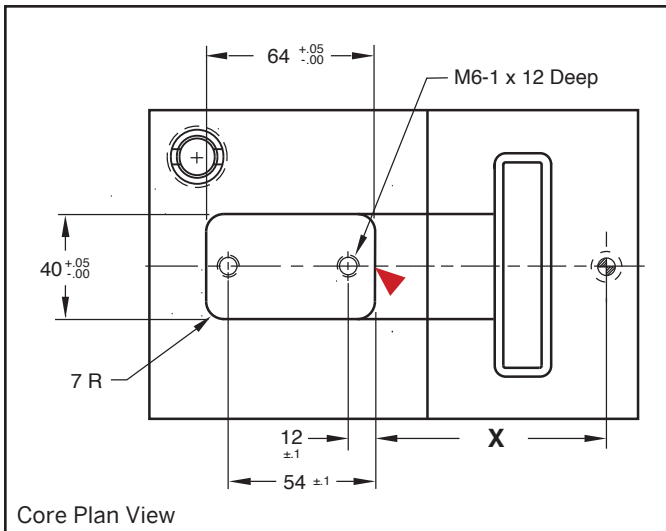
- Each assembly includes SRT-10 Slide Retainer and (3) mounting screws. Individual replacement parts are available.
- Max operating temperature 425°F (220°C).
- Replacement parts are available. Refer to the price list for catalog numbers and pricing.

PART NAME	MATERIAL/TREATMENT
Lock	H-13, 40-44 HRC, Black Nitride
Slide	H-13, 40-44 HRC, Titanium Nitride
Guide	4140, 28-32 HRC, Black Nitride



CAM ACTION®

350 SERIES: METRIC STANDARD



Travel = 18mm

▶ CAD insertion point

CATALOG NUMBER	DESCRIPTION
CAMM-350	CamAction Unit: 350 Series (Metric)

*Minus pre-load.

Notes:

- Each assembly includes SRTM-04 Slide Retainer and (3) mounting screws. Individual replacement parts are available.
- Max operating temperature 425°F (220°C).
- Replacement parts are available. Refer to the price list for catalog numbers and pricing.

PART NAME	MATERIAL/TREATMENT
Lock	H-13, 40-44 HRC, Black Nitride
Slide	H-13, 40-44 HRC, Titanium Nitride
Guide	4140, 28-32 HRC, Black Nitride

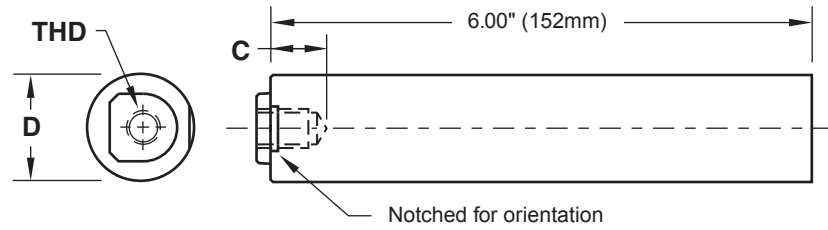
CAM ACTION® ACCESSORIES

300 SERIES CORE PINS

M M-2 **H** 58-62 HRC **S** Chrome Plated

CATALOG NUMBER	D	THD Socket Head Cap Screw	C
CAP3-750	.7504 .7508	1/4-20 x 7/8	3/4
CAP3MM-19	19.009 mm 19.019 mm	M6-1 x 20	20 mm

Screw included.

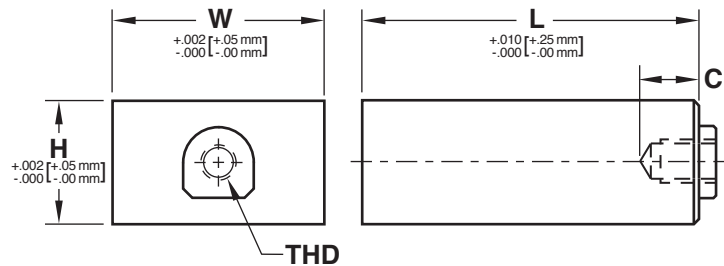


300 SERIES INSERTS

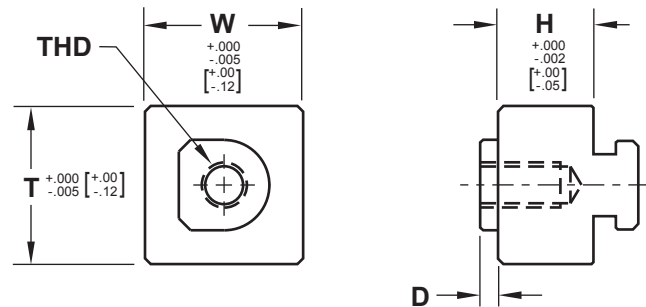
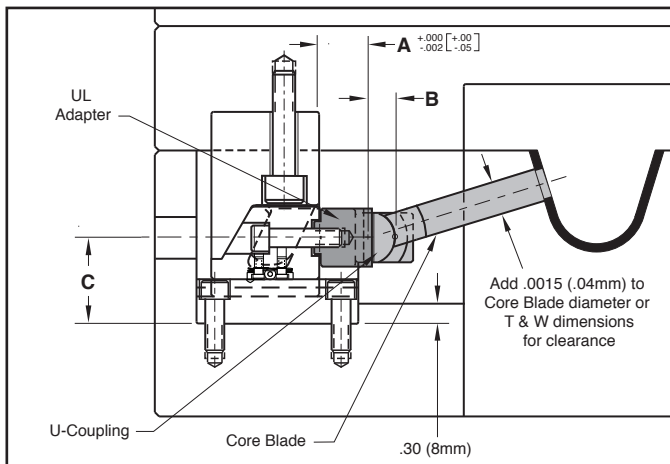
M P-20 Pre-Hard **S** Salt Bath Nitride

CATALOG NUMBER	H	W	L	THD Socket Head Cap Screw	C
CSE3-50	.875	1.500	.50	1/4-20 x 7/8	5/8
CSE3-200	.875	1.500	2.00	1/4-20 x 7/8	5/8
CSE3MM-12	22 mm	38 mm	12 mm	M6-1 x 20	15 mm
CSE3MM-50	22 mm	38 mm	50 mm	M6-1 x 20	15 mm

Screw included.



300 SERIES UL ADAPTERS



M 4140 **S** Salt Bath Nitride

CATALOG NUMBER	T	W	H	D	THD Socket Head Cap Screw	A	B	C	COMPATIBLE U-COUPLING
CTG-300	.875	.875	.563	.098	1/4-20 x 7/8	.75	.406	1.187	UCU87
CTGMM-300	23 mm	23 mm	6 mm	2.5 mm	M6-1 x 22	12 mm	10 mm	30.15 mm	UCMM22

Screw included. UniLifter Core Blades and U-Couplings are sold in section H.



CAM ACTION® ASSEMBLIES SELECTION GUIDE

Progressive's CamActions provide easy installation for molding and releasing details. Several sizes and travel configurations are available.

- Advanced materials and treatments for long-lasting production.
- Inserts and pins available in all series.
- For application assistance, please contact tech@procomps.com.



Inch Standard

TRAVEL	OVERALL ASSEMBLY SIZES	CATALOG NUMBER	CAMACTION SERIES	PAGE NUMBER
.160"	1.00" X 1.25" X 1.00" H	CA-100	100 Series	G-2
.230"	1.00" X 1.25" X 1.50" H	CA-200	200 Series	G-3
.230"	1.00" X 1.25" X 4.12" H	CA-200L*		
.150"	.50" X .75" X 1.25" H	CA-250-15	250 Series	G-6
.310"	.80" X 1.38" X 1.75" H	CA-250-31		
.500"	1.25" X 2.00" X 2.75" H	CA-250-50	300 Series	G-8
.250"	1.50" X 2.25" X 2.25" H	CA-300		
.250"	1.50" X 2.25" X 5.79" H	CA-300L*		
.750"	1.50" X 2.63" X 2.63" H	CA-350	350 Series	G-10
1.000"	3.00" X 4.00" X 4.44" H	CA-400	400 Series	G-13

L= Longer Driver or Lock to extend below parting line.

Metric Standard

TRAVEL	OVERALL ASSEMBLY SIZES	CATALOG NUMBER	CAMACTION SERIES	PAGE NUMBER
4mm	26 X 32 X 25.4 H	CAMM-100	100 Series	G-2
5.8mm	26 X 32 X 38.1 H	CAMM-200	200 Series	G-3
5.8mm	26 X 32 X 103.2 H	CAMM-200L*		
4mm	12 X 20 X 32 H	CAMM-250-4	250 Series	G-6
8mm	20 X 34 X 47 H	CAMM-250-8		
12mm	32 X 50 X 68 H	CAMM-250-12		
6.35mm	40 X 60 X 57.7 H	CAMM-300	300 Series	G-9
6.35mm	40 X 60 X 147.4 H	CAMM-300L*		
18mm	40 X 64 X 66.5 H	CAMM-350	350 Series	G-11

L= Longer Driver or Lock to extend below parting line.